



# CSA copper mine Australia

APRIL 2026



A high-grade, operating copper asset in a Tier 1 jurisdiction

**Harmony acquired the CSA copper mine in New South Wales, Australia, in October 2025. The CSA copper mine is one of the highest-grade copper mines in Australia.**

This acquisition introduces a high-grade, long-life, established underground copper-producing asset to the Harmony portfolio.



## Our copper strategy

Our CSA acquisition is part of a deliberate long-term strategy to increase Harmony's copper exposure in a Tier-1 jurisdiction. The fundamentals of the orebody continue to validate this decision. Harmony is positioning CSA for safe, predictable production over the long term and unlocking potential regional synergies as our footprint in Australia grows.

Together, the CSA mine and our Eva Copper Project are expected to produce 100 000 tonnes of copper annually within the next three to five years.

#MiningWithPurpose





# Positioning CSA for long-term success

## Safety prioritised

- As at all Harmony operations, safety is non-negotiable
- An unplanned seven-day stoppage was undertaken to upgrade a secondary egress system
- Further significant upgrades to shaft steelwork will continue through the remainder of the financial year.

## Integration of CSA within Harmony

- Led by a dedicated project team, the integration is progressing well
- Focus is on embedding Harmony's governance framework, operating standards and disciplined capital and risk management processes
- Welcoming the CSA workforce into the broader Harmony group was a key focus in the initial stages with an emphasis on skills retention and alignment of the CSA leadership team.

## Extensive drilling programme underway

- An extensive integrated underground and surface drilling programme is to be conducted over the next 24 months to enhance geological, geotechnical and metallurgical understanding to inform mine design, long-term planning and potential expansion
- Drilling will test the eastern margin of the orebody - areas that were not previously drilled but which have already delivered significant intersections outside the current resource, highlighting strong growth potential
- Initial results indicate potential for an increased Mineral Resource with significant, high-grade intercepts recorded
- A deeper drilling programme, targeting extensions below the current resource, is scheduled to begin early in H1FY27.

## Optimised mining and production

- A dedicated project team is advancing key capital projects to de-risk and de-bottleneck the mine, ensuring a more efficient and sustainable operating platform
- A geotechnical review has established a stope extraction sequence focussed on safe predictable production
- Decline development and ventilation programme being prioritised
- Steel support infrastructure replaced on two levels - further upgrades to shaft steelwork to continue
- Merrin mine development paused, pending outcome of drilling programme to enhance geological confidence
- Strategic sourcing and tendering initiatives implemented to enhance cost efficiencies
- Optimisation project to take approximately 24 months.

## Highlights



Addition to Mineral Reserve  
(gold equivalents)  
**2.8Moz**



Long-life asset  
**12+ years**



Recovered grade guidance  
**>3.5% copper**



FY26 copper production  
(Nov 2025 - Feb 2026)  
**17 500t - 18 500t**



Low C1 cash costs  
**US\$2.65/lb - US\$2.80/lb**



The underground CSA mine is located ~700km from Sydney in the Cobar region of New South Wales, Australia. The Cobar region has a long history of mining with well-established infrastructure and a highly skilled labour force.

CSA, one of Australia's longest operating copper mines, has a history dating back almost 150 years. The mine is 1.9km deep and has a reserve grade of 3.4% Cu.

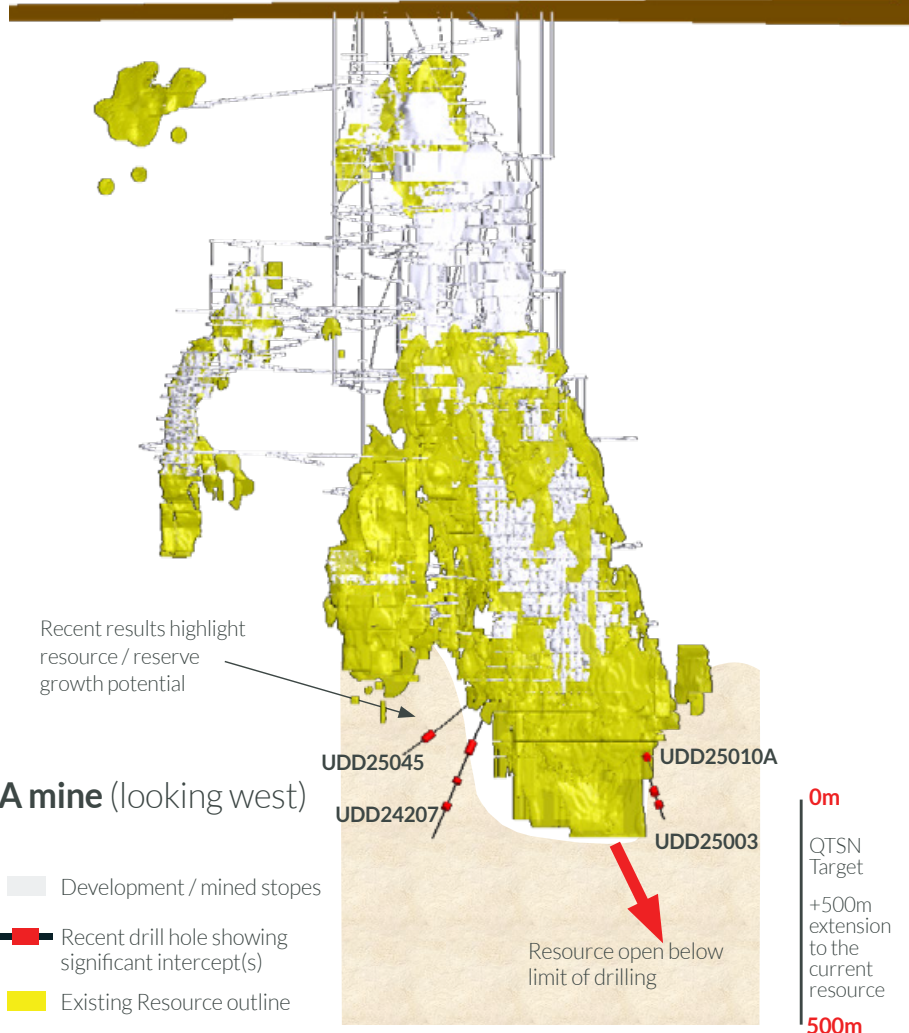
Harmony holds tenements covering a total of 756 square kilometres in the area which have the potential to expand and extend CSA's mine life.



## CSA mine: Exceptional copper ore body

Significant high-grade intercepts outside of existing resource

- Extensive drilling programme planned
- Track record of Resource to Reserve conversion
- Positioning CSA for long-term value creation through safe, predictable production



## Significant high-grade intercepts

UDD25045	UDD24207	UDD25003	UDD25010A
32.4m @ 8.2%Cu	37.4m @ 3.7%Cu	10.3m @ 6.6%Cu	19.4m @ 4.0%Cu
	12.2m @ 5.1%Cu	14.0m @ 6.5%Cu	16.0m @ 3.3%Cu
	17.1m @ 3.2%Cu		